

Project Profile

MetaMAP™

Franklin County Sheriff
Columbus, OH

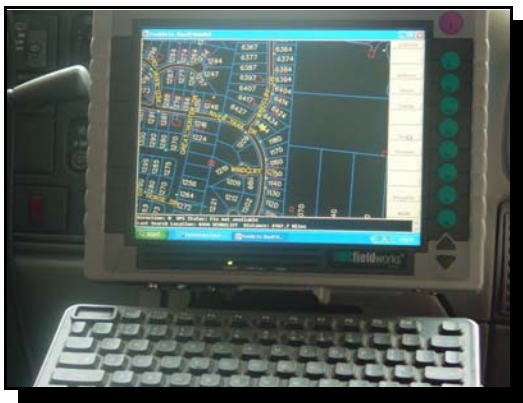
Project Summary

The Franklin County Sheriff's Department has approximately 55 patrol cars and various other support vehicles. They also have a 911 dispatch center to cover the Sheriff's jurisdiction as well as managing 911 services for other agencies within the county. The project provided an enterprise Geographic Information System (GIS) mapping and AVL solution for three groups of users: mobile, dispatchers, and management.



Project Highlights

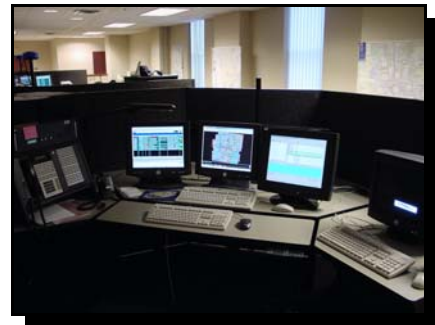
In-Car Mapping – All vehicles have virtually the county's entire GIS database at their disposal. This includes streets, roads, parcels, contours, fire hydrants, water features, drainage, various boundaries – a total of over 50 layers. In addition, the users can overlay the vector mapping data on the county's aerial photography, allowing the patrol officers to "look" into back yards before leaving their vehicles.



GPS Interface – The system is interfaced with a GPS in each vehicle, which allows the user to observe their position as well as any searched locations they are approaching. After a selected location is entered, the system is "hands off," zooming in automatically as the destination is

approached. At night, officers can drive down a street with no headlights and know the address of each location as they pass.

Dispatch AVL – Each dispatch workstation has a dedicated MetaVUE PC with a dedicated monitor. Although the program could coexist with other applications on the other PC, it was decided to have a dedicated screen for the convenience of the users. The dispatch operators can view all the current vehicle locations on a county map or a district map. A single car can be followed on a closeup map. The system will report the closest units to a user-selected address.



Management – Each patrol car’s movements are stored in archived databases. These databases can be stored as long as the department wishes. There are various playback and reporting options for querying the archived data. For example, the entire route of a day’s patrol can be played back in a few seconds. In addition, a report can be generated that shows all the addresses at which a car stopped for a specified length of time. They can also have all of the functionality of the dispatch stations.



Custom Map Display – The user interface and database design were customized for the particular tasks performed by the users. The user interface design means the product is intuitive enough that minimal training is needed. All of the display colors and various feature labeling is customized for use in the mobile application so the map is legible at all display levels.

licenses are MetaVUE Network Licenses, which means they can be run anywhere within the Sheriff’s secured network. It can even be run at the low-speed remote locations using Windows Terminal Server. The GIS database, which is maintained by the Franklin County Auditor, can be updated at will via the county network.

Enterprise Solution – All of the desktop

Contact Information

Thomas Welch,
Franklin County Sheriff’s Department
Information Technology Bureau
410 South High Street, Third Floor
Columbus, OH 43215
phone – 614-462-3113
email – tfwelch@co.franklin.oh.us
web – www.sheriff.franklin.oh.us

Don C. Morgan
MetaMAP, Inc.
Post Office Box 910568
Lexington, KY 40591-0568
phone – 859-223-7651
email – dmorgan@metamap.com
web – www.metamap.com

